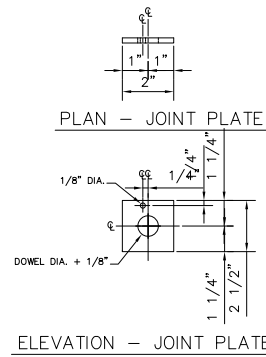
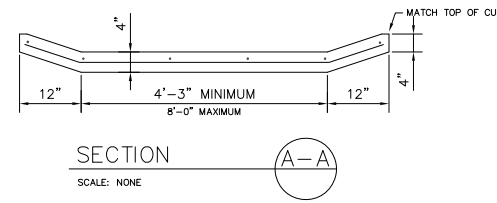
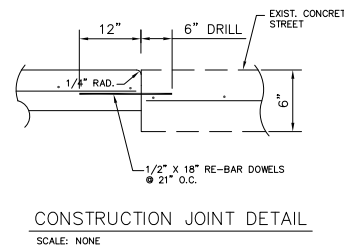


- NOTES:
- DUMMY CONSTRUCTION JOINTS ARE TO BE SPACED ON 6'-0" CTR.-CTR.
  - EXPANSION JOINTS ARE TO HAVE A MAXIMUM SPACING OF 30'-0" CTR.-CTR. AT INTERSECTIONS OR AS DIRECTED BY THE ENGINEER.
  - ALL NEW SIDEWALK SHALL BE DOWELED INTO EXIST. PAVEMENT, DRIVEWAYS, & SIDEWALK ALL EDGES AND JOINTS TO BE EDGED.
  - SIDEWALK SHALL BE 1" TO 6" ABOVE TOP OF CURB, OR AS APPROVED BY THE CITY ENGINEER.

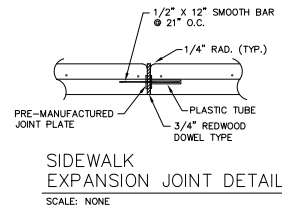


CONNECTION TO EXISTING SIDEWALK OR DRIVEWAY  
SCALE: NONE



CONSTRUCTION JOINT DETAIL  
SCALE: NONE

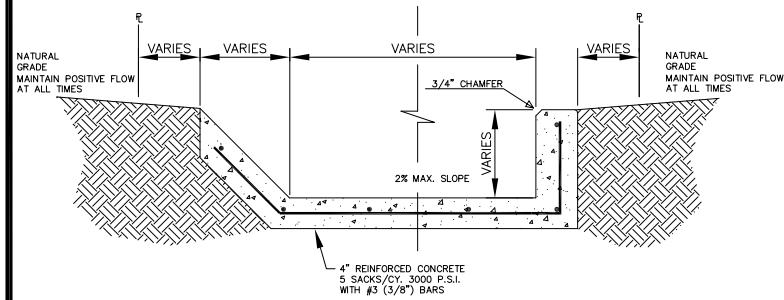
SECTION A-A  
SCALE: NONE



SIDEWALK EXPANSION JOINT DETAIL  
SCALE: NONE

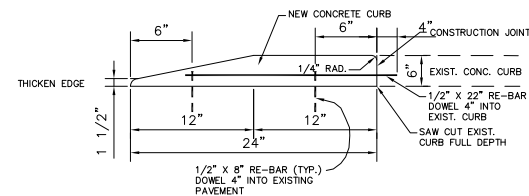
4' WIDE CONCRETE SIDEWALK DETAILS

SCALE: NONE

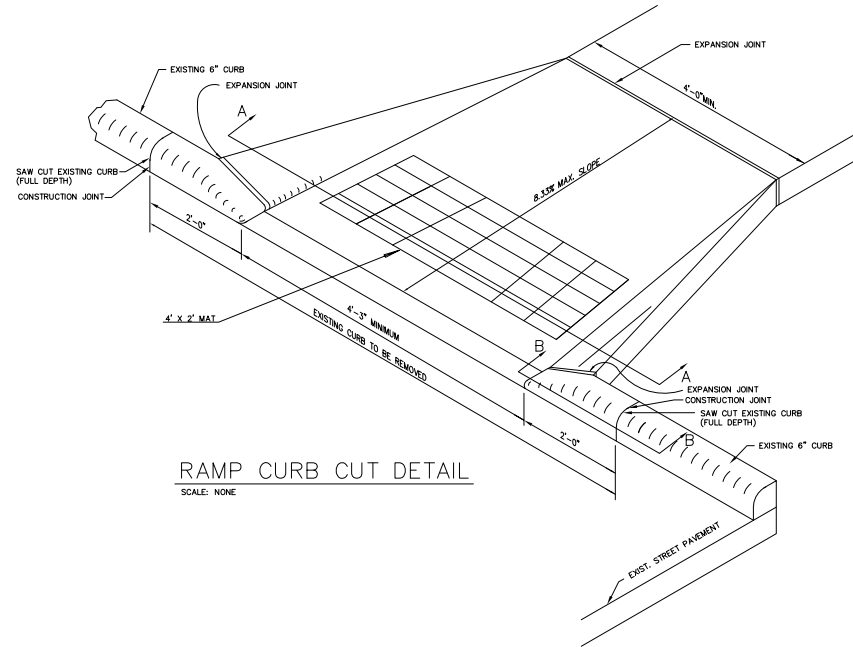


FLARED/STRAIGHT WALL DETAIL

SCALE: NONE

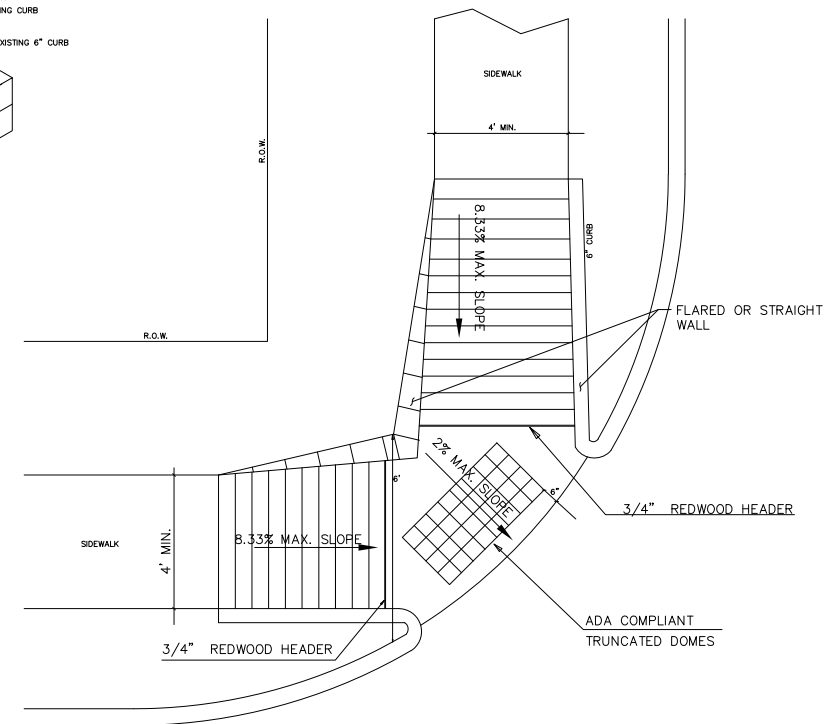


SECTION B-B  
SCALE: NONE



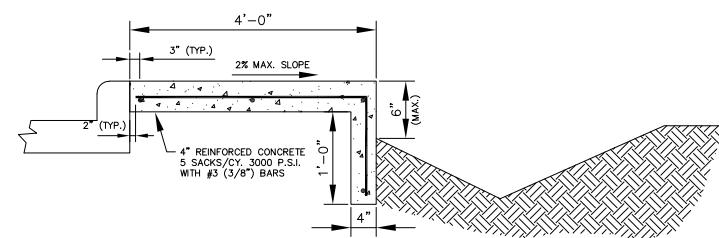
RAMP CURB CUT DETAIL

SCALE: NONE



CURB/CORNER RAMP DETAILS

SCALE: NONE



SIDEWALK SECTION @ DITCH/SWALE

REVISIONS		NO.	DATE	DESCRIPTION
1				
2				
3				
4				
5				
6				

DATE: 1-11-2011	PROJECT NO. 3147-10
DRAWN BY: JIMENEZ/WAE	CHECKED BY:
SCALE: NOT TO SCALE	CAD FILE NAME: SIDEWALK DETAILS

CITY OF DEER PARK  
SIDEWALK IMPROVEMENTS -02011  
SIDEWALK DETAILS

